

Sl. No.	Company Name	Block Name	Date of Allotment	Sector	GR in MT	GR (90%) in MT	Grade	Grade	Basic Price	Cost Price of respective Grade for respective Year	Net Revenue (per Tonne)	Total Benefit extended (in Rs. Million)	Total Benefit extended (in Rs. Crore)
a	b	c	d	e	f	$g = f * 0.9$	h	i	j	k	$l = j - k$	$m = g * l$	$n = m / 10$
	Industries		2008 Total		2980.22							544448	54445
65	Jindal Steel & Power Ltd.	Ramchand i Promotio nal Block	27-Feb-09	CTL	1500.00	1350.00	NA	F	440	282.77	157.23	212261	21226
66	Strategic Energy Tech. System Ltd.	North of Akhnapal	27-Feb-09	CTL	1500.00	1350.00	G & F	F	440	195.11	244.89	330602	33060
67	Rungta Mines Ltd./ Kohinoor Steel Pvt. Ltd.	Mednirai	28-May-09	Power & Sponge Iron	80.53	72.75	D - G	F	570	241	325.00	23934	2393
68	Tata Steel Ltd. & Adhunik Thermal Energy Ltd.	Ganeshpu r	28-May-09	Power	137.00	123.30	F - G	F	570	241	325.00	40566	4057
69	Sunflag Iron & Steel and Dalmia Cements.	Khappa Extn	29-May-09	Sponge Iron/ Cement	89.21	80.2863	B - G	E	990	1158.2	-168.17	-13502	-1350
70	AMR Iron & Steel Ltd., Century Textile & Ind. And J K Cements Ltd.	Bander	29-May-09	Sponge Iron/ Cement/ Cement	31.50	28.35	B - E	E	990	1158.2	-168.17	-4768	-477
71	Monnet Ispat & Energy Ltd. & Topworth Steel Ltd.	Rajgarma Dipside (South of Phulakdi nalla)	3-Jun-09	Steel/ Steel	61.69	55.52	B - E	E	660	231.32	428.68	23801	2380
72	IST Steel & Power, Gujarat Ambuja Cements, Lafarg India Ltd.	Dahagaon Makardho kra IV	17-Jun-09	Steel/ Cement/ Cement	132.00	118.80	NA	F	520	342.99	177.01	21029	2103
73	Bhusan Steel Ltd.	Andal East	3-Jul-09	Steel/ Pig	700.00	630.00	D - F	F	760	506.56	253.44	159667	15967

Sl. No.	Company Name	Block Name	Date of Allotment	Sector	GR in MT	GR (90%) in MT	Grade	Grade Considered	Basic Price (Notified Price)	Cost Price of respective Grade for respective Year	Net Revenue (Per Tonne)	Total Benefit extended (in Rs. Million)	Total Benefit extended (in Rs. Crore)
a	b	c	d	e	f	$g = f * 0.9$	h	i	j	k	$l = j - k$	$m = g * i$	$n = m / 10$
	Jai Bajaj Ind. & Rashmi Cement			Iron/Cement									
74	Himachal EMTA / JSW Steel Ltd.	Gourangdi h ABC	10-Jul-09	Power	129.15	116.24	F	F	760	506.56	253.44	29459	2946
75	Ramswarup Lohh Udyog, Adhunik Corp, Uttam Gaiva Steel & Howran Gases, Vikas Metals Power and ACC	Moiria Madhujor e	6-Oct-09	Steel/ Sponge Iron/ Cement	685.39	616.85	B - E	F	760	506.56	253.44	156335	15633
76	JSP, Monet hpat & Energy Ltd.	Urban North	12-Oct-09	SIP	69.82	62.8407	W-II-IV	F	976	690.04	285.96	17970	1797
			2009 Total		5116.59							997352	99735
			Grand Total		15355.79							2936948	293695

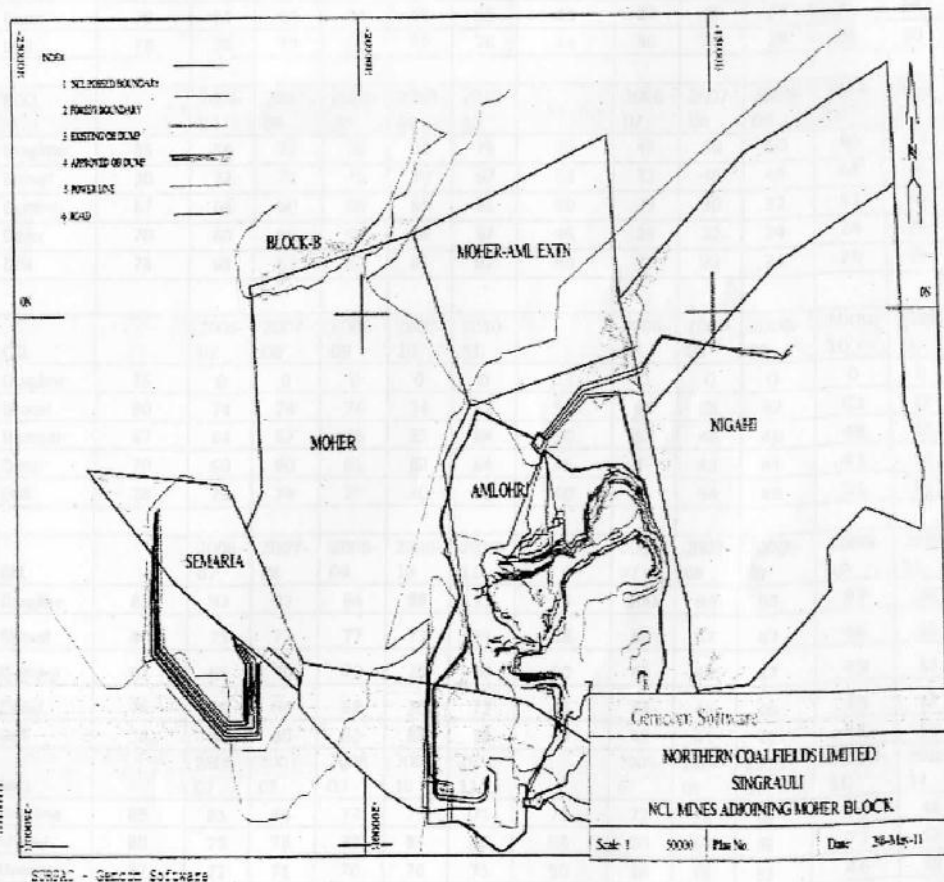
- The main source of the working sheet is Quarterly Status Report of allocated coal blocks and their associated End Use projects for Q.E. 30th June 2011 annexed with Coal Controller's letter No. CC/MCBA/101/01/2005 – Policy dated 01.09.2011 addressed to The Joint Secretary (Coal), Ministry of Coal.
- The source of GR in case of Belgaon block in Maharashtra was "Details of Coal Blocks allocated as on 23.06.2011" available in the website of the MoC available in the link [www.coal.nic.in/allocated.pdf](http://www.coal.nic.in/allocated.pdf) as the GR for the block was not available in the Quarterly Status Report.
- Grade taken into consideration was E or F.
- Notified Selling Price per Tonne (SPT) of F grade coal of Non Long Flame Coal (NLFC), for ECL Rajmahal Project, for MCL, for SFCL (E & F grade), for WCL (E grade) and for CCL were taken for the blocks falling in the state of West Bengal, Orissa, Chattisgarh, Maharashtra and Jharkhand respectively.
- Cost Price per Tonne (CPT) of F grade coal, of ECL Rajmahal Project, of MCL, of Rajgarh project (F Grade) and Deepka project (E Grade) of SFCL, of WCL (E grade) and Cost of Ashok / Piparwar Project of CCL were taken for the blocks falling in the state of West Bengal, Orissa, Chattisgarh, Maharashtra, Jharkhand respectively.
- In case of blocks falling in the state of Madhya Pradesh Selling prices and Cost prices worked out by NCL, Amlohri project for the combined grade mined at NCL, Amlohri were taken.

- In case of 1 block of MCL (Ramchandi Promotion block) prices (sale price and cost price) of Hingula area of MCL was considered as it was nearest to the above block.



# Annexure - II

Annexure-II



**Annexure – III**

**Statement showing subsidiary wise performance of HEMM**

Sl No.	Equipment	CMPDIL Norms	Percentage of availability (actual)					CMPDIL Norms	Percentage of utilisation (actual)				
			2006-07	2007-08	2008-09	2009-10	2010-11		2006-07	2007-08	2008-09	2009-10	2010-11
	<b>CIL</b>												
1	Dragline	85	85	83	81	78	78	73	78	76	72	72	66
2	Shovel	80	73	72	74	73	72	58	49	48	49	49	45
3	Dumper	67	67	66	66	66	66	50	36	35	36	37	35
4	Dozer	70	64	64	64	64	65	45	27	27	27	27	27
5	Drill	78	75	75	76	77	76	40	30	29	29	31	30
	<b>BCCL</b>		2006-07	2007-08	2008-09	2009-10	2010-11		2006-07	2007-08	2008-09	2009-10	2010-11
1	Dragline	85	58	72	70	52	75	73	47	56	50	40	52
2	Shovel	80	72	72	73	70	67	58	52	49	48	48	45
3	Dumper	67	64	60	60	64	61	50	29	30	32	31	30
4	Dozer	70	60	56	56	58	57	45	24	22	24	24	24
5	Drill	78	69	63	62	62	62	40	21	22	24	26	25
	<b>CCL</b>		2006-07	2007-08	2008-09	2009-10	2010-11		2006-07	2007-08	2008-09	2009-10	2010-11
1	Dragline	85	0	0	0	0	0	73	0	0	0	0	0
2	Shovel	80	74	74	74	74	72	58	64	65	62	63	57
3	Dumper	67	64	67	66	65	64	50	51	48	46	48	50
4	Dozer	70	60	60	61	62	64	45	45	43	41	41	36
5	Drill	78	73	74	77	80	78	40	65	54	48	51	55
	<b>ECL</b>		2006-07	2007-08	2008-09	2009-10	2010-11		2006-07	2007-08	2008-09	2009-10	2010-11
1	Dragline	85	92	92	84	88	93	73	100	99	92	97	102
2	Shovel	80	75	77	77	73	74	58	66	67	67	66	65
3	Dumper	67	68	70	70	70	68	50	46	42	47	49	52
4	Dozer	70	69	64	68	70	73	45	44	46	46	45	43
5	Drill	78	80	80	80	83	78	40	47	41	43	48	56
	<b>MCL</b>		2006-07	2007-08	2008-09	2009-10	2010-11		2006-07	2007-08	2008-09	2009-10	2010-11
1	Dragline	85	81	86	77	73	71	73	72	78	69	70	48
2	Shovel	80	76	78	77	83	80	58	60	62	66	71	57
3	Dumper	67	72	71	70	70	75	50	38	38	39	46	39
4	Dozer	70	67	65	66	64	67	45	45	45	48	50	49
5	Drill	78	69	76	76	78	80	40	70	69	73	89	83

Sl No.	Name of the equipment	CMPDIL Norms	Percentage of availability (actual)					CMPDIL Norms	Percentage of utilisation (actual)				
			2006-07	2007-08	2008-09	2009-10	2010-11		2006-07	2007-08	2008-09	2009-10	2010-11
	<b>NCL</b>												
1	Dragline	85	85	82	82	77	78	73	94	89	88	85	84
2	Shovel	80	63	62	62	61	64	58	50	50	53	53	55
3	Dumper	67	64	61	60	58	60	50	52	49	48	48	46
4	Dozer	70	70	71	68	69	68	45	34	31	31	31	31
5	Drill	78	78	76	75	75	78	40	48	50	47	44	44
	<b>SECL</b>		2006-07	2007-08	2008-09	2009-10	2010-11		2006-07	2007-08	2008-09	2009-10	2010-11
1	Dragline	85	88	87	81	82	80	73	98	95	88	88	77
2	Shovel	80	78	78	78	78	80	58	86	82	83	86	75
3	Dumper	67	72	74	72	71	72	50	58	60	58	52	49
4	Dozer	70	67	71	69	67	69	45	48	48	44	45	46
5	Drill	78	83	83	83	87	87	40	83	88	80	84	69
	<b>WCL</b>		2006-07	2007-08	2008-09	2009-10	2010-11		2006-07	2007-08	2008-09	2009-10	2010-11
1	Dragline	85	93	84	82	94	79	73	107	94	92	107	87
2	Shovel	80	75	72	75	74	72	58	74	71	74	74	68
3	Dumper	67	68	68	70	70	67	50	54	52	56	56	53
4	Dozer	70	62	61	62	64	60	45	48	48	49	50	49
5	Drill	78	77	76	77	76	73	40	56	52	56	59	56

#### *Annexure-IV*

##### **Major Recommendations of the Expert Committee**

Government of India, Ministry of Coal constituted a seven member committee under the Chairmanship of Shri T.L. Sankar on December 2004. The Expert Committee was to prepare a comprehensive road map for the modernization of the coal sector. The committee submitted Part-I of the Report in December 2005 which basically covered issues of immediate relevance i.e. short to medium term (2011-12) issues. The present Performance Audit Report has considered the recommendations of the Expert Committee vis-à-vis the actions taken by MoC in this regard. The salient features of the recommendations are given below:

- To keep the import option functioning as an essential supply option along with the regulation of price in the Indian coal industry which would ensure least cost supply of coal for power generation while allowing a competitive and transparent coal market to supply the needs of other consumers.
- Railways should in consultation with Planning Commission and Ministries of Coal and Power to determine the main corridors through which coal would move in very large quantities to power plants and examine the cost and feasibility of setting up of dedicated trunk-routes for coal transport.
- Organisation having long experience in importing coal be co-opted in implementing short term supply management programme.
- Elevation of status of CIL.
- Emphasise on the role of captive mining to contribute significantly to production of coal in the short to medium term..
- The procedures and processes of allocation of coal blocks needed to be improved to expedite the allotment of the captive coal blocks in a transparent and effective manner.
- Releasing coal blocks with inferred and indicated categories of reserves for captive mining would not likely to achieve the objective of increasing the number of players in coal mining in the short to medium term.
- Production from captive blocks during mine development or periodic surpluses during mine operations must be sold to CIL / SCCL at a negotiated price with a band of plus or minus 10 percent of CIL price for the same quality of Coal.
- Major delays occur, in most cases, in obtaining environmental clearance, approval for land and mining leases from the concerned State Governments and the subsequent land acquisition process. MoC should take a proactive role in monitoring the approvals and clearance by the State authorities. An empowered high powered committees of

Secretaries should be set up for the purpose to consider the application for environment clearances within a time frame of four to six months.

- Submission of Bank Guarantee, 50 per cent of which linked to guaranteed production and 50 per cent to setting up of end use projects.
- Legal measures to cancel licenses issued earlier if the allottee failed to take adequate steps to bring the allotted mines to production or in setting up of end use plants and encashment of BG in full in such cases.
- To launch a programme of detailed exploration and drilling in the Eleventh Plan, aimed at increasing 'proved' category reserves by increasing the drilling capacity of CMPDIL from 3 lakh metres per annum to at least 15 lakh metres per annum by involving all eminent agencies within the country and outside.
- E-auction sell for a minimum of 10 per cent of domestic production initially and thereafter to 20 per cent by the third year and to reach 30 per cent over a period of 5 to 7 years.
- De-reservation of CIL blocks that cannot be put into production before 2026-27.
- Railways, Coal and Power Ministry have to work together to draw up a well-conceived model of FSTA. GoI should ensure that all the concerned Ministries and agencies accept the FSTA and perform as per its provisions.
- Setting up of a permanent Special Task Force to monitor progress of clearances and project implementation of all projects required to be completed by the end of the Eleventh Plan to fully realise CIL's production plans including the Emergency Production Plan to enhance domestic coal production capacity.



### List of Abbreviations

BCCL	Bharat Coking Coal Limited
BEML	BEML Limited (formerly Bharat Earth Movers Limited)
BG	Bank Guarantee
BIFR	Board for Industrial & Financial Reconstruction
BT	Billion Tonne
CAGR	Cumulative Annual Growth Rate
CBM	Coal Bed Methane
CCDA	The Coal Mines (Conservation And Development) Act, 1974
CCL	Central Coalfields Limited
CCO	Coal Controller's Organisation
CEA	Central Electricity Authority
CHP	Coal Handling Plant
CIL	Coal India Limited
CM	Continuous Miner
CMD	Chairman-cum-Managing Director
CMPDIL	Coal Mine Planning and Design Institute Limited
CPP	Captive Power Plants
CPPL	Chitrangi Power Private Limited
CuM / cum	Cubic Metre
DGMS	Director General of Mine Safety
ECL	Eastern Coalfields Limited
EMP	Environment Management plan
EGoM	Empowered Group of Ministers
EUP	End use Project
FC	Forest Clearance
FSA	Fuel Supply Agreement
FSTA	Fuel Supply and Transport Agreement
GEECL	Great Eastern Energy Corporation Limited
GR	Geological Reserve
GSI	Geological Survey of India
HEMM	Heavy Earth Moving Machineries
ISP	Indian Standard Procedure
JORC	Australasian Joint Ore Reserves Committee
LA	Land Acquisition
LHD	Load Haul Dumper
MARC	Maintenance and Repair Contract
MCL	Mahanadi Coalfields Limited
MECL	Mineral Exploration Corporation Limited
MGR	Merry Go Round
ML	Mining Lease
MMDR Act	Mines and Minerals (Development and Regulation) Act

MoC	Ministry of Coal
MoEF	Ministry of Environment and Forests
MoP	Ministry of Power
MoS	Minister of State, Coal and Mines
MoU	Memorandum of Understanding
MPERC	Madhya Pradesh Electricity Regulatory Commission
MT	Million Tonne
MTY	Million Tonne per Year
MW	MegaWatt
NCDP	New Coal Distribution Policy
NCL	Northern Coalfields Limited
NDP	Normative Date of Production
NTPC	NTPC Limited (formerly National Thermal Power Corporation Limited)
OB	Over Burden
OC	Open Cast
OCp	Open Cast Project
OMS	Output per Man Shift
OTR Tyres	Off the road Tyres
PMO	Prime Minister's Office
PSU	Public Sector Undertaking
PSLW	Power Support Long Wall
RFD	Results Framework Document
RPL	Reliance Power Limited
SCCL	Singareni Collieries Company Limited
SCIL	Shipping Corporation of India Limited
SDL	Side Discharge Loader
SEBI	Securities and Exchange Board of India
SECL	South Eastern Coalfields Limited
SED	Stowing Excise Duty
SPL	Sasan Power Limited
SPV	Special Purpose Vehicle
Syn-gas	Synthetic gas / Synthesis gas
UG	Under Ground
UMPPs	Ultra Mega Power Projects
UNFC	United Nations Framework Classification
WCL	Western Coalfields Limited

## Bibliography

1. Annual Plan 2011-12 : Ministry of Coal, New Delhi.
2. Coal Vision 2025 of Coal India Limited
3. Red Herring Prospectus of Coal India Limited
4. Provisional Coal Statistics 2010-2011 : O/o the Coal Controller's Organisation
5. Sales and Marketing Report of Coal India Limited
6. Printed Annual Report and Accounts of Coal India Limited and its Subsidiaries
7. Report of the Expert Committee on Road Map for Coal Sector Reforms 2005
8. Annual Performance Report of Coal India Limited
9. Report of the Working Group on Coal and Lignite for Formulation of Eleventh Five Year Plan (2007-12)
10. Coal Directory Part – I 2009-10 of O/o the Coal Controller's Organisation.
11. Press Information Bureau, Government of India
12. Status of Allocated Coal Blocks for Quarter Ending June 2011 : O/o the Coal Controller's Organisation
13. TERI Report (March 2011)
14. New Coal Distribution Policy 2007
15. Coal Memoir (June 2004) published by Coal India Limited
16. Report (May 1993) of the Technical Group for reducing dependence on coking coal
17. Strategic Plan of Coal India Limited